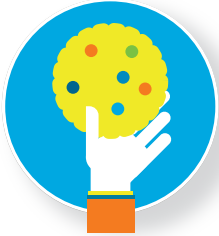


Merry & Meaningful Math Activities

Your students keep up skills over the holidays and have fun along the way!



1

Be a Cookie Monster | Measurements & Fractions

Everyone loves cookies! Use a cookbook or back of a mix box to reference amounts, then double or triple the recipe to incorporate fractions for a yummy learning experience.



2

Shop | Percentages

Setting a budget for gifts or using a gift card for needed items is good percentage practice. If items are on sale, kids can figure out new prices based on the percentage discount. Try online shopping this year to practice social distancing and look into how you can shop to small business in your community.



3

Visit Ted | Multiple Topics

The [TED-Ed Math in Real Life](#) series has original, animated lessons that feature words and ideas of educators. There are quizzes, ways to dig deeper, and teaching ideas to help create and customize lessons.



4

Check the Temps | Calculations & Conversions

Practice reading a thermometer and keep a log of each day's temperatures. Calculate the difference in temperatures between days and make educated predictions about the next day's temperature. Advanced students can practice converting temperatures from Fahrenheit to Celsius.



5

Walk About | Geometry

Math is all around us – 2D and 3D shapes are everywhere! Take a walk. If kids have a phone, they can snap pictures and share them once school is back in session, or create their own notebook to track shapes they've spotted.



6

Plan a Party | Calculations

A hypothetical (or real!) holiday party to host means there's a need to calculate in planning. If you opt to plan a real party, let's keep social distancing in mind and make it virtual. Calculate the number of guests, cost of different materials like decorations or party favors to mail to friends, how much time is needed for preparation, and more



7

Not-Fantasy Football | Measurements & Graphing

Keep track of yards gained and lost from running versus passing plays of your favorite football team. Make comparisons between the best players and display it graphically.



8

Take a Drive | Estimation

Estimate when a mile has been traveled, then verify it via odometer. At the gas station, calculate how much the final bill will be based on the cost per gallon.



9

What's the Winter Solstice? | Graphing

[Windows to the Universe](#) explains sun movements that can be used to create a graph. Check the weather page online or in the newspaper for sunrise and sunset times over a week or two for double bar graph stats.



10

Wrap It Up | Surface Area & Nets

Choose a gift box, find the area of an object, and work out the smallest rectangle of paper needed to wrap it so that it's completely covered.



11

Google-y Math | Multiple Topics

[Real World Math](#) is a collection of free math activities for Google Earth designed for students and educators. Concepts and challenges can be presented in a meaningful way that portray the usefulness of the ideas.



12

Happy 2020! | Multiple Topics

Create a custom calendar filled with artwork, holidays, family and friend birthdays noted. Use the calendar to discuss days, weeks, months, years and use the calendars to answer math questions. Primary students—do you know a days of the week song? Sing it to your family!



One of the things in the border is wrong. Can you find it?

$2 \times 0 = 0$



$2(a + b) = 2a + 2b$



$\frac{5}{4} = 1\frac{1}{4}$

$(a + b)(a + b) = a^2 + 2ab + b^2$



$0 \times 2 = 0$



$298 + 189 = 300 + 187$



$287 > 278$



$300 - 199 = 301 - 200$



$717 < 171$

$a^2 + b^2 = c^2$



$\frac{50}{100} = \frac{5}{10} = \frac{1}{2}$



$2(a - b) = 2a - 2b$



Drawing a DreamBox Character

Character: Another Güb

Difficulty Level: Easy



- 1** Start with a curved box that's a little taller than it is wider.



- 2** Add the eyes. It's ok for the eyes to overlap the box. You'll erase it next.



- 3** Now erase parts of the box marked red so that the eyes are clear. If you accidentally erase other parts, just redraw those lines.



- 4** Draw in the arms and legs. Take your time—it's the hardest part of the drawing.



- 5** Erase the part of the box where the arms and legs meet it (marked in red).



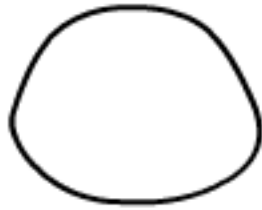
- 6** Finally, add the mouth. Now you can color your Güb! (See picture at the top.)

 **ALL DONE!**

How to Draw Hemi

①

Draw a circle for the head.



⑤

Small circles below the body make feet.



②

Add a body below the head that looks like this:



⑥

Add a face!



③

Add lines to define the belly.



⑦

Finish everything by drawing 2 arms.



④

Draw large ears on the head.



⑧

Add color.

